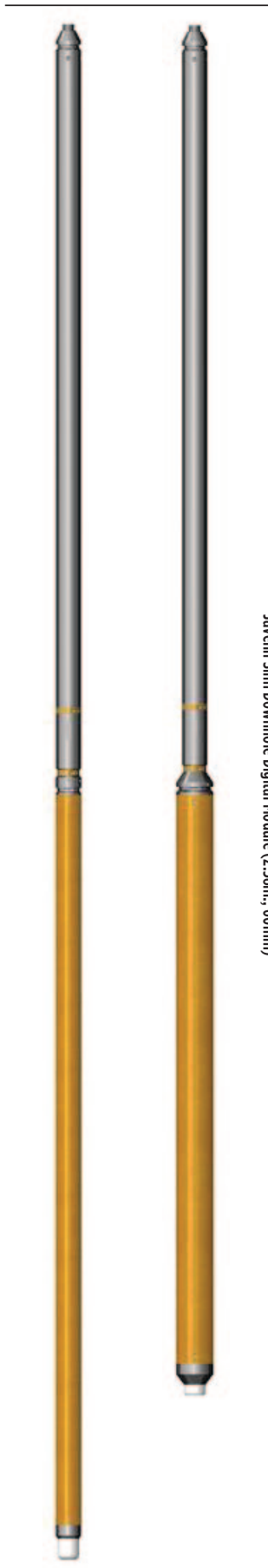


NMR Javelin® Wireline Slim

Small-Diameter Nuclear Magnetic Resonance Wireline Logging Tool



Javelin Slim Downhole Digital Module (2.38in., 60mm)

JPY238

JPY350

For professional geophysical logging operators

The new Javelin® Wireline Slim provides high-resolution, continuous measurements of principal aquifer properties for groundwater and environmental investigations:

- Porosity
- Pore size distribution
- Natural gamma
- Bound and mobile water content
- Hydraulic conductivity

SPECIFICATION:

Applications

- Geotechnical site investigations
- Groundwater resource management
- Aquifer storage and recovery
- Environmental site characterization
- Mine water engineering
- Brine and leach mining

Features

Interchangeable Probes

- 2.38in (60mm) and 3.5in (89mm) probes allow operation in a wide range of core holes and groundwater wells
- Integrated field joints for rapid and secure deployment

Widest Diameter of Investigation

- Largest Diameter of Investigation of any small or medium diameter magnetic resonance logging tool
- Measures properties of native formation past the disturbed zone

Multiple Depths of Investigation

- Two independent DOI shells measured during a single logging run allows users to assess radial variability

Ultra-Short Echo Spacing

- Echo spacing as short as 450 microseconds ensures accurate measurement of clay-bound water content

Industry-Standard Wireline Compatibility

- Operation on 4-conductor or 7-conductor wireline cable ensures seamless integration with existing logging operations

Flexible Surface Station

- Surface station housing tool power, control, and telemetry electronics operates both the Javelin® Wireline Slim and larger Javelin® Wireline Max logging systems

Specifications

Javelin Probes:	JPY238	JPY350
Diameter:	2.38in (60mm)	3.5in (89mm)
Length:	74in (188cm)	72in (183cm)
Weight:	25lb (11kg)	55lb (25kg)
Pressure Rating:	2350 PSI	1700 PSI
Sensitive Diameters:	F ₁ : 9in (23cm)	F ₁ : 12in (30cm)
	F ₂ : 11in (28cm)	F ₂ : 15in (38cm)
Vertical Resolution:	9in (25cm)	18in (50cm)
Echo Spacing:	450µs	600µs

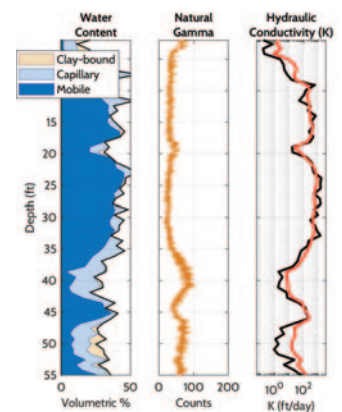
Downhole Digital Module:

Diameter:	2.38in (60mm)
Length:	70in (178cm)
Weight:	39lb. (18kg)
Length w/ Gamma Sensor:	85in (217cm)
Weight w/ Gamma Sensor:	45lb. (20kg)
Natural Gamma Sensor:	Optional Logging Speed: 100-500 ft/hr
Cable:	3/16 inch (or larger), 4-core or 7-core

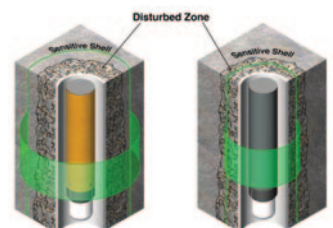
CE Certified, FCC, CTick, CE Emissions Compliant
 Protected by US Patents: US 10,162,026 B2; US 10,302,733 B2; US 8,816,684 B2; US 9,348,054 B2; US 9,588,068 B2.
 JAVELIN is a registered trademark of Vista Clara.



Two independent measurement shells (shown to scale)



Examples of logging data



Javelin deep-view sensitivity

Unusable data without deep-view



Surface Station is available as a rackmount unit (4U) or housed in a compact, shock-mounted case.

[▶ CLICK HERE FOR ENQUIRY FORM](#)